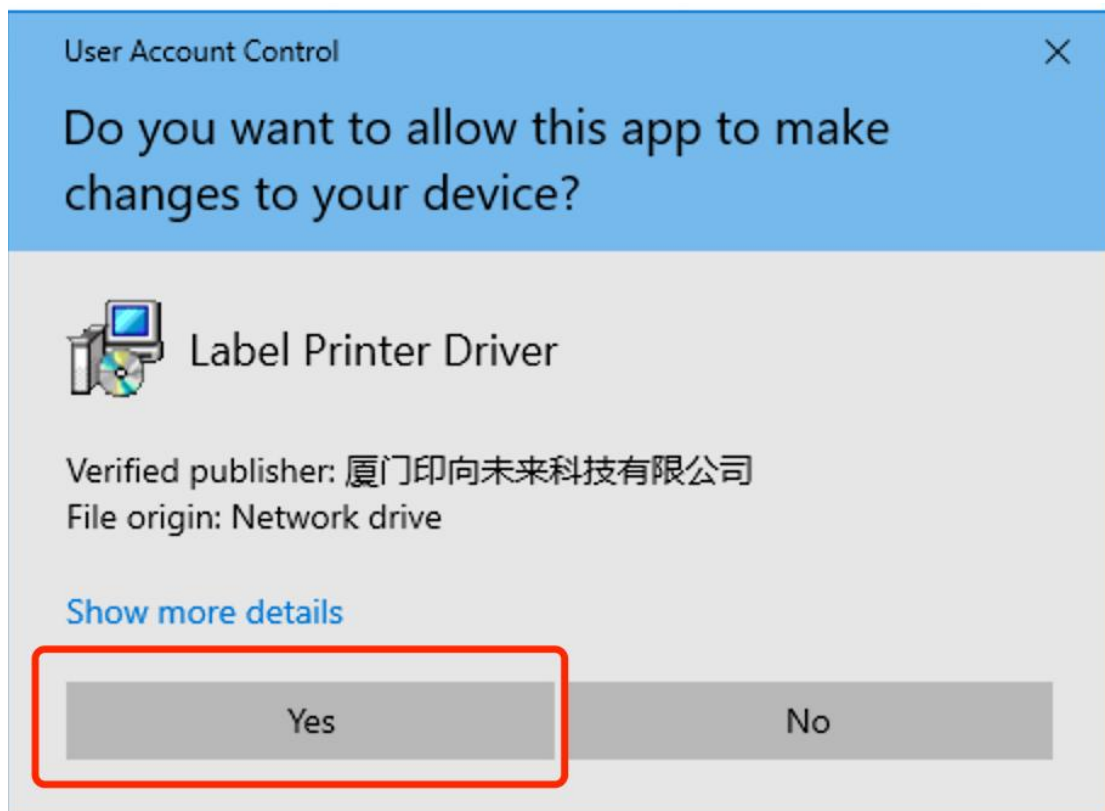


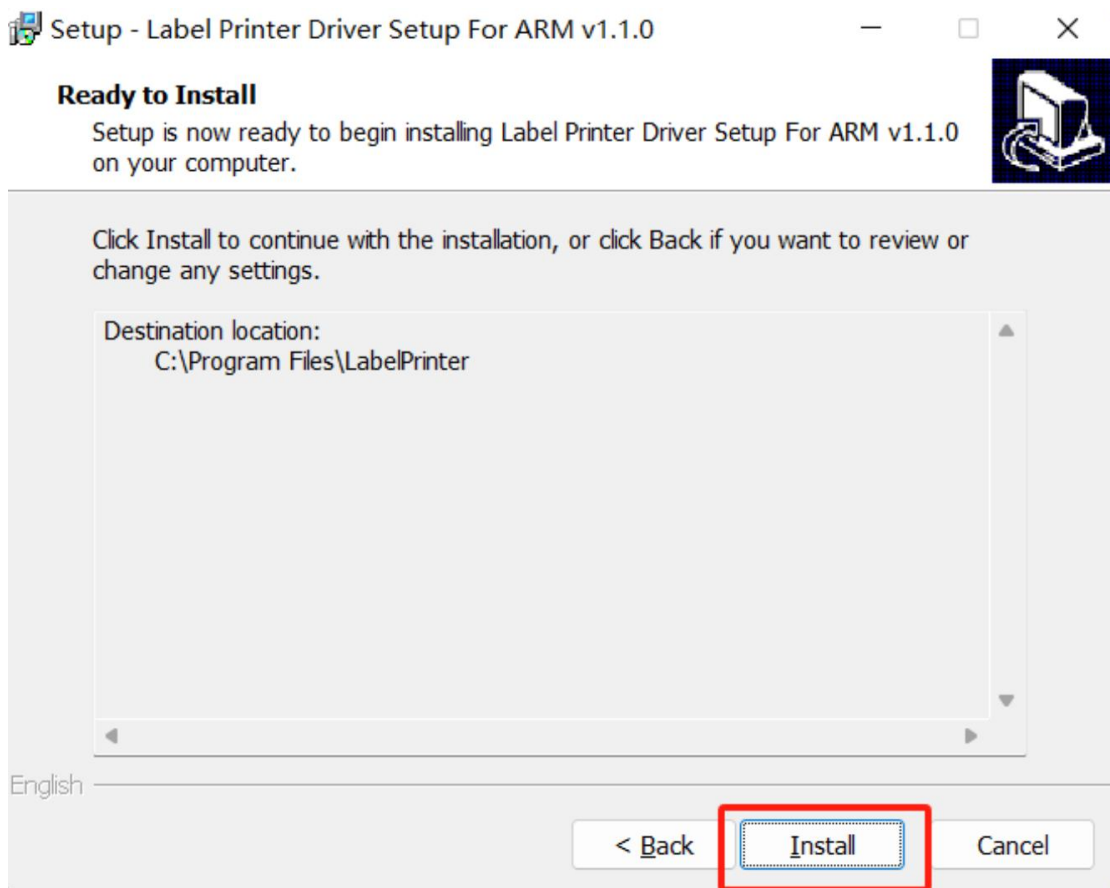
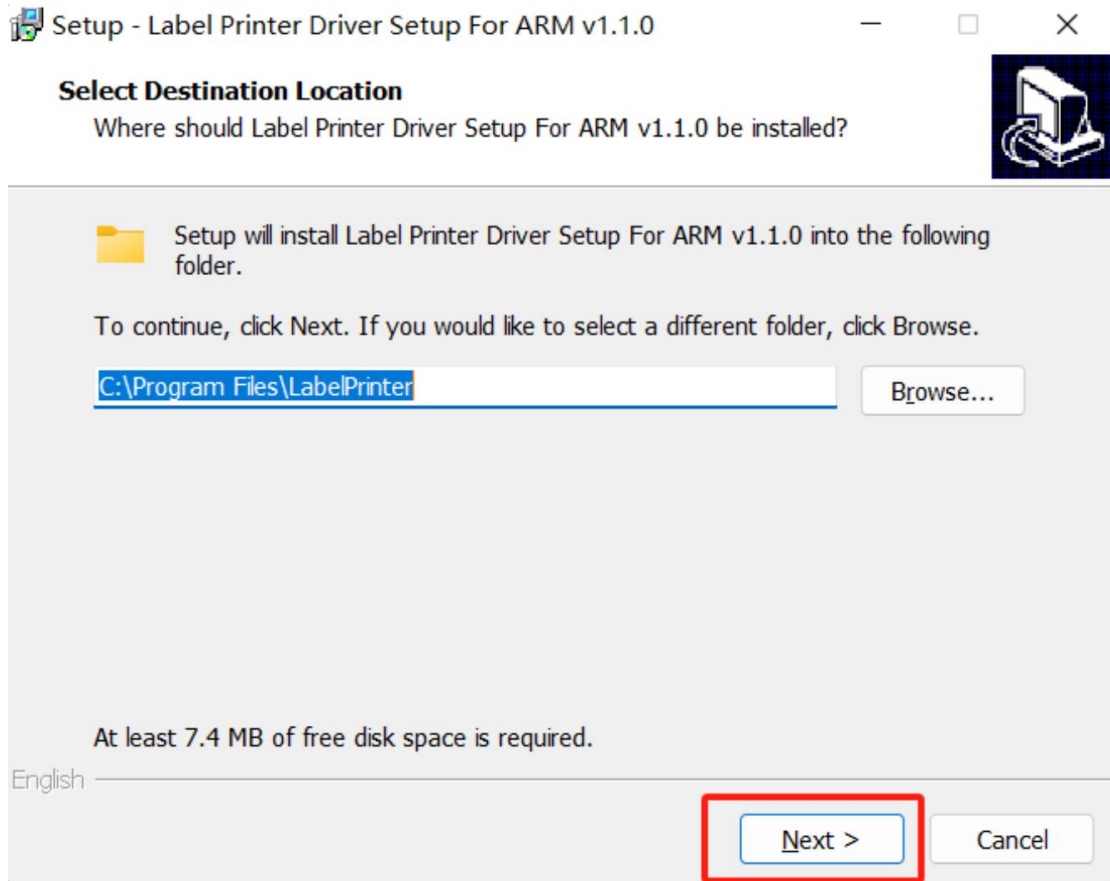
Install Driver on ARM-based Windows via USB cable

Supported model list: Y813

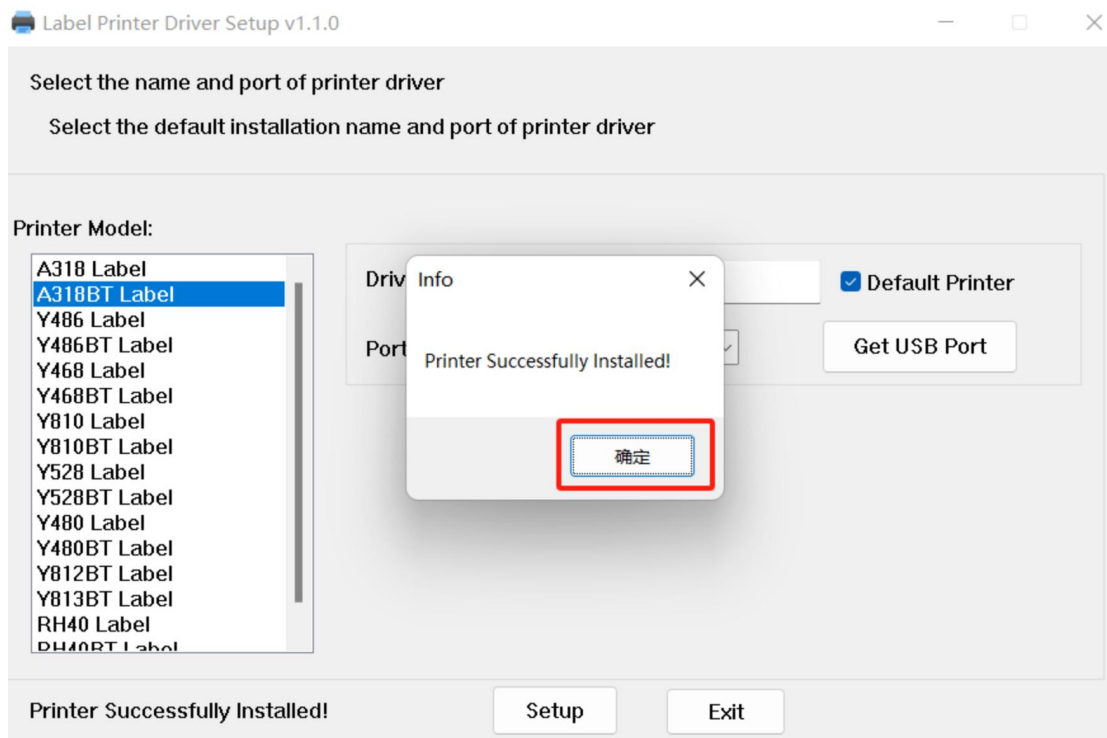
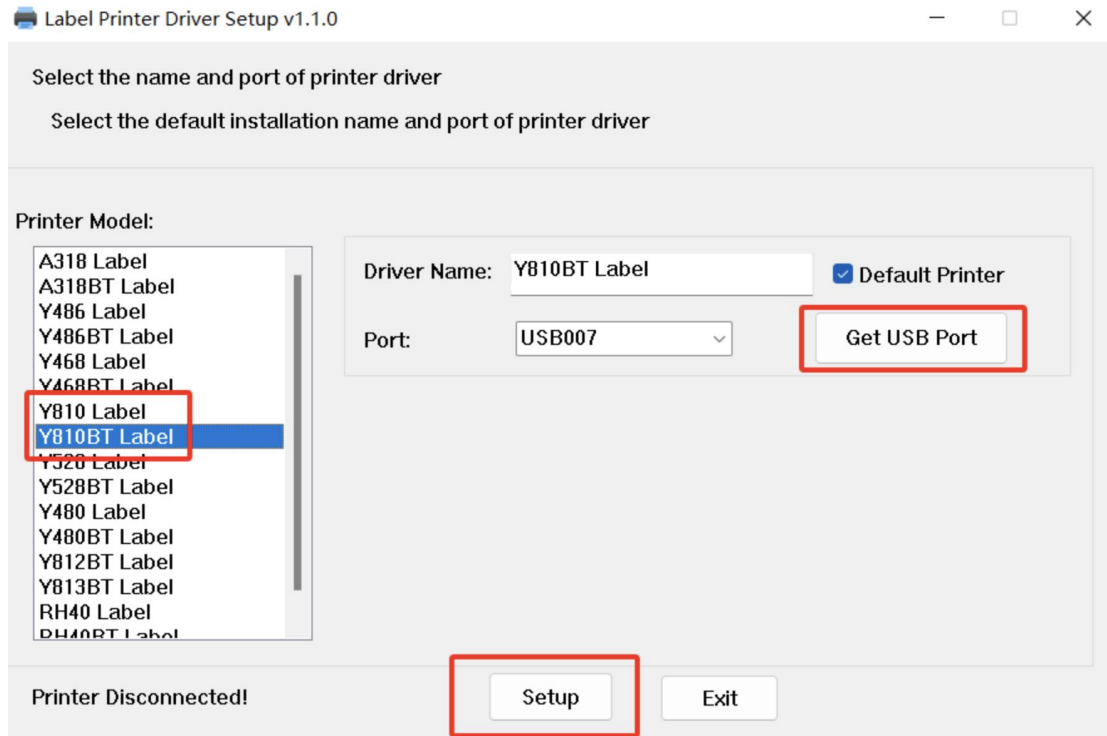
It takes a few minutes to show how to install FlashLabel Printer driver on windows via USB:

1. Please ensure printer is Turn OFF.
2. Connect printer to your computer via USB Cable,
3. Connect the power cable to the printer, and plug it into the socket.
4. Turn ON printer.
5. Download Printer driver.
6. Unzip download file and run "Label Printer Driver Setup For ARM v1.1.0.exe", follow below steps to finish installation.





note: If you connect the printer and turn on, you can directly populate the Port option using "Get USB Port".



7. Enjoy your printing with FlashLabel Printer!