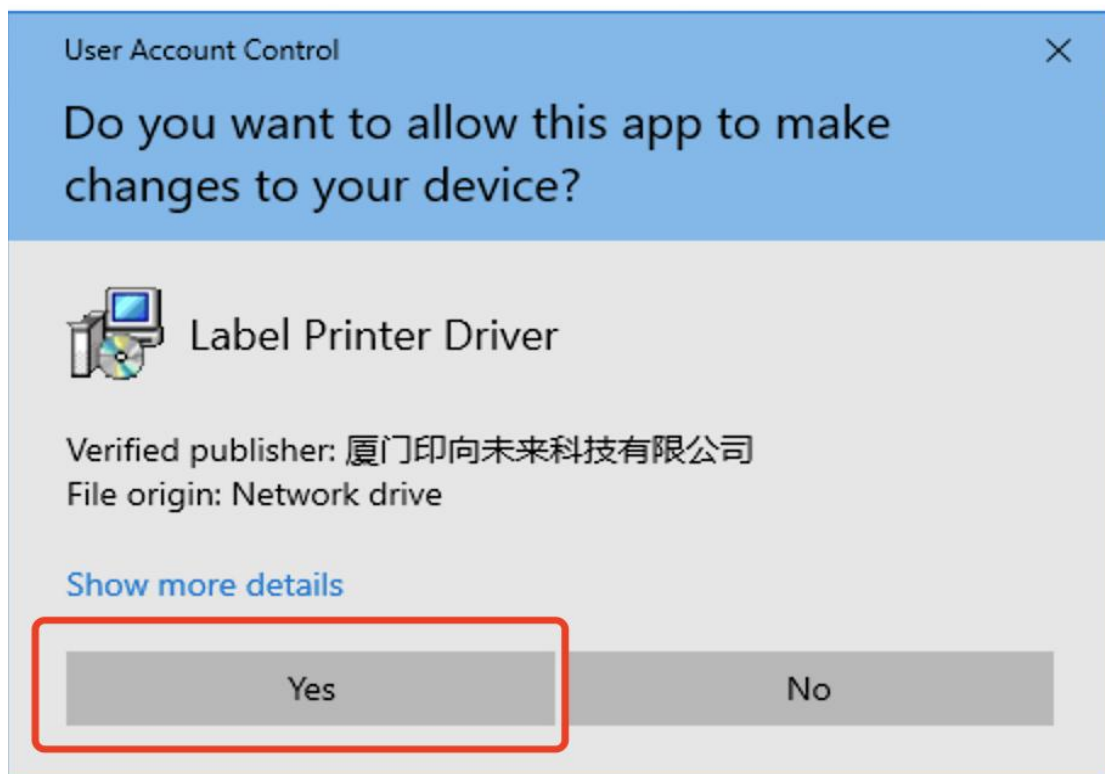


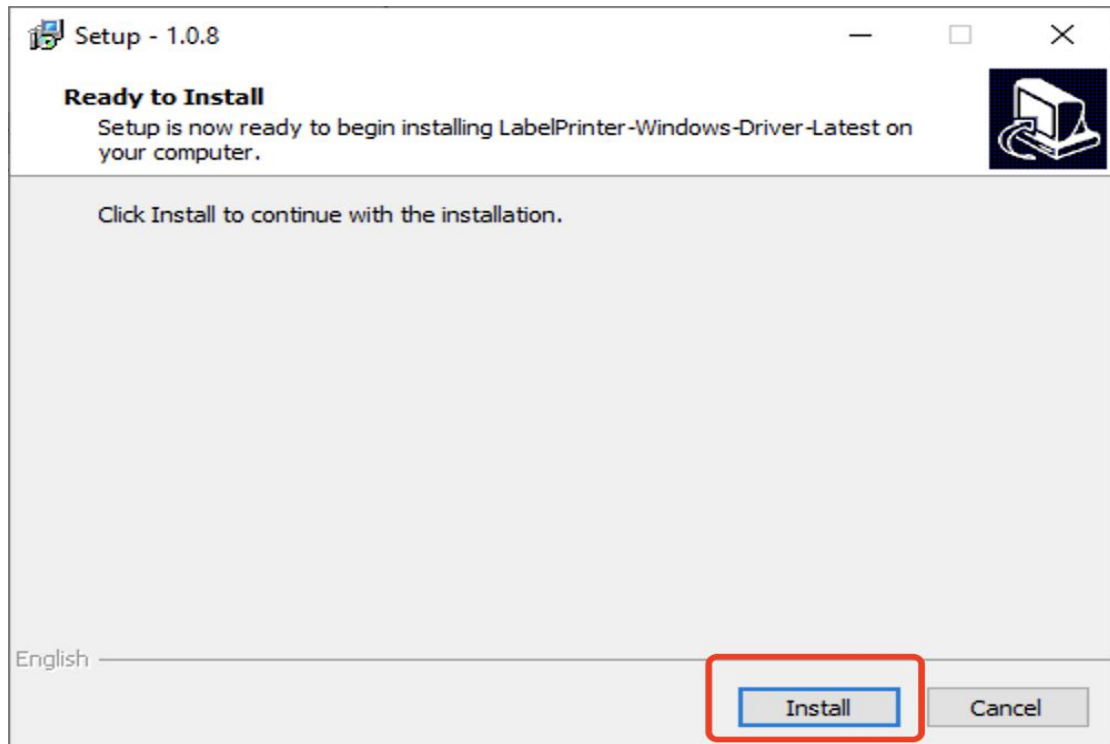
Install Driver on Windows via USB cable

Supported model list: Y813

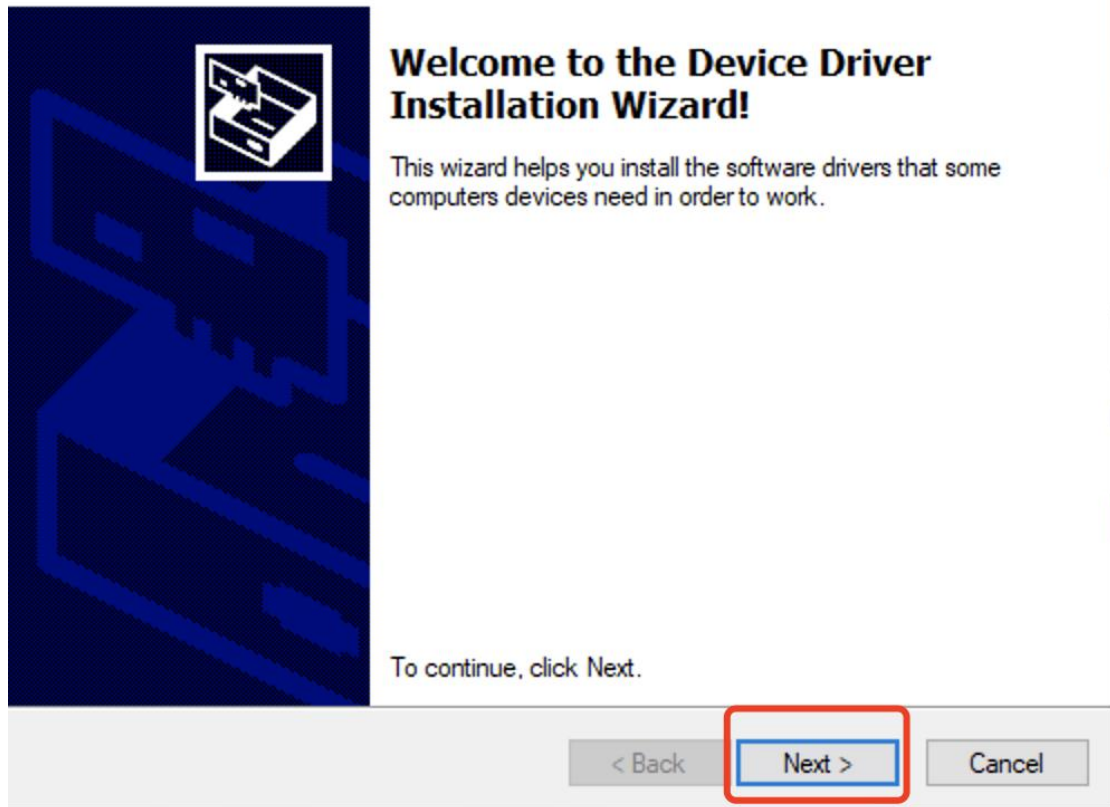
It takes a few minutes to show how to install FlashLabel Printer driver on windows via USB:

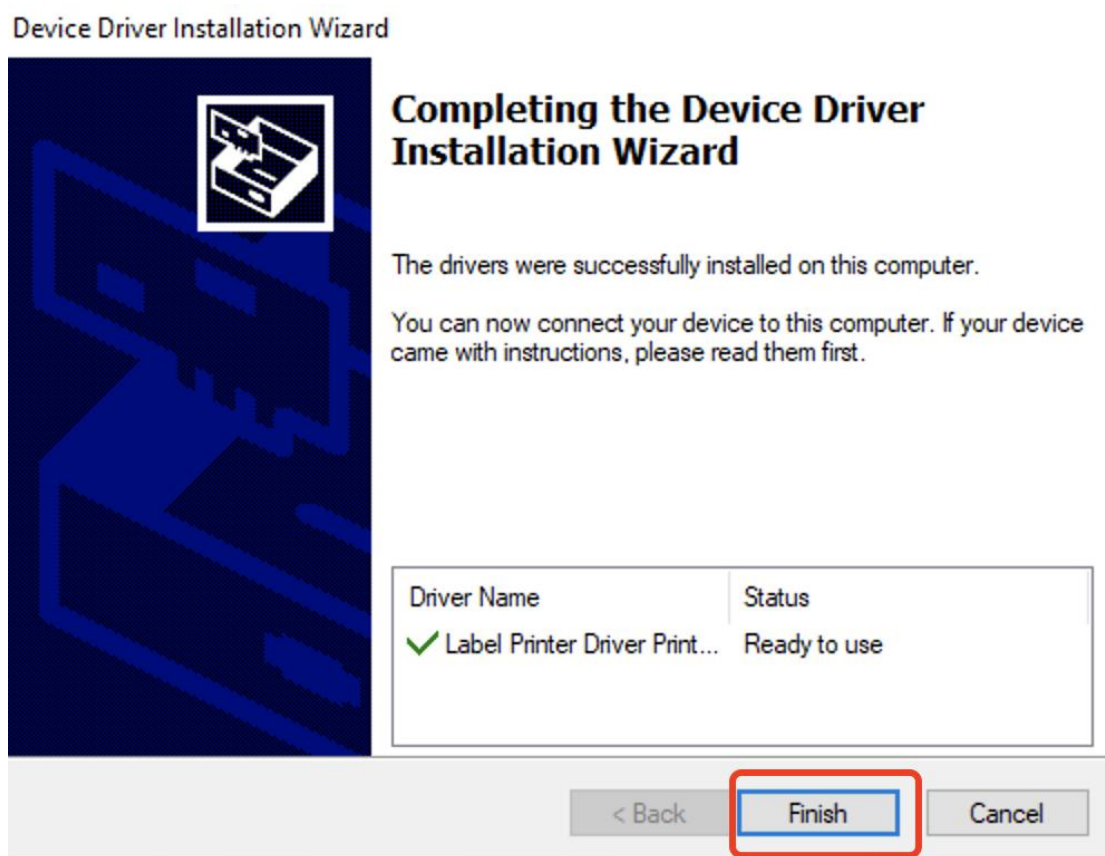
1. Please ensure printer is Turn OFF.
2. Connect printer to your computer via USB Cable.
3. Attach the power cable to power adapter, then connect the power cable to the printer, and plug it into the socket.
4. Turn ON printer.
5. Download Printer driver
6. Unzip download file and run "LabelPrinter-Windows-Driver-latest.exe", follow below steps to finish installtion.

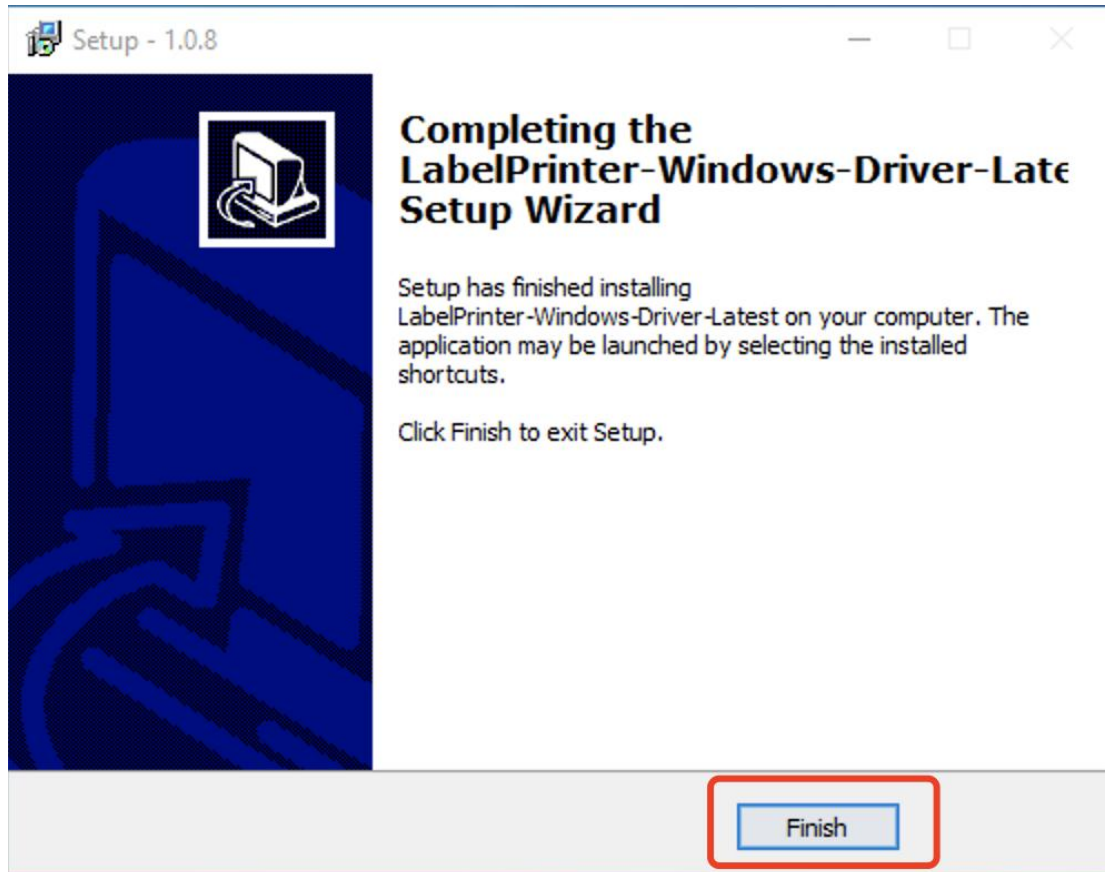




Device Driver Installation Wizard







7. Enjoy your printing with FlashLabel Printer!